

# THE SMITHSONIAN TORCH



SMITHSONIAN INSTITUTION, WASHINGTON, D. C.

NO. 13 (NEW SERIES), FEBRUARY 1966

## GEORGE WASHINGTON'S TENT DISPLAYED

The Smithsonian Institution celebrated George Washington's birthday in a special way this year with a permanent exhibit of a tent of the General used during the Revolutionary War. When the top is spread out flat, it measures 32-1/2 feet long and 23 feet wide. The continuous sidewall averages 5-1/2 feet in width and extends over 80 feet in length.

The tent had a quiet history following the Revolutionary War. It was taken to Mt. Vernon, and, after the death of General Washington, it was passed on to Martha Washington's grandson, George Washington Parke Custis, who was reared at Mt. Vernon. The tent was pitched and actually used on certain special occasions such as the visit of Lafayette to the U.S. in 1824-25.

In 1844, Custis presented the tent to the U.S. Government which deposited it in the Model Hall of the Patent Office. It was transferred to the U.S. National Museum in 1883. Because of its size, the tent had never been pitched for public exhibit until the opening of the Armed Forces Halls in MHT last summer.

It is made of unbleached plain-woven linen, a naturally strong and durable material, which, along with the good care it has received over the years, accounts for its excellent condition today. The top of the tent has a scalloped edge finished with a red twill-woven wool border. For the continued preservation of the tent, the Smithsonian staff decided to remove the harmful elements of dust, mud, and rust as well as to neutralize the general acid condition of the linen.



The Smithsonian basketball team, "Class-B," has won all seven games to the present. They are, left to right, T. Thomas, R. Garrison, T. Powell, J. Randolph, and E. Prince.

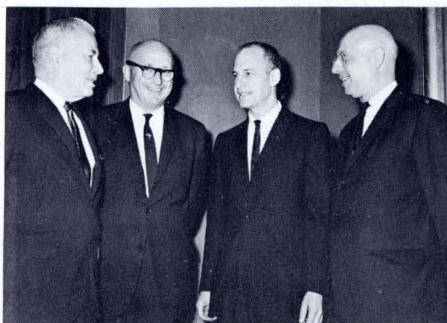


Snow Scene February 1966

## HAWKINS SCORES AGAIN AS FLEMMING AWARD WINNER

Gerald S. Hawkins, Astronomer, SAO, was selected by the Arthur S. Flemming Awards Commission as one of the ten outstanding young men in the Federal Government for the year 1965. He was honored at a luncheon on Thursday, February 17, at the Statler Hilton Hotel.

Dr. Hawkins received recognition for his contributions to our understanding of meteoric phenomena and the influx of solid material on earth; for original achievement in demonstrating an astronomical alignment in the stones and archways of Stonehenge; for his significant research on the nature of tektites and lunar craters; for the advancement of the undergraduate and graduate astronomy programs at Boston University; and for the diffusion of knowledge in astronomy through extensive public and scientific speaking and writing.



S. Paul Johnston, director of NAM, Edwin Link, representing the Link Foundation, George M. Low, deputy director of the NASA Manned Spacecraft Center at Houston, and Sidney R. Galler, SI Asst. Sec. for Science, meet at the 3d Edwin A. Link Lecture, "The Apollo Program—A Midstream Appraisal." The lecturer was Mr. Low.

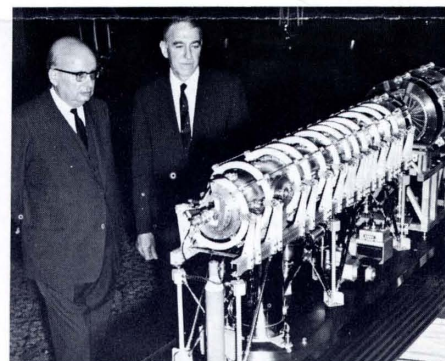
## LATEST NEWS ON SMITHSONIAN ASSOCIATES

Membership in the Smithsonian Society of Associates this month reached 1124 with the announcement of the names of the first group of founding members. Founders include the Honorable David K. E. Bruce, The Honorable Douglas Dillon, Mrs. John Clifford Folger, and Mr. and Mrs. Sidney Zlotnick.

In addition to the founders the Society now consists of 30 life members, 54 contributing members, 544 family members and 492 individual members.

Special parking privileges have just been announced by Secretary Ripley as the latest benefit for Society members. Bumper stickers will soon be mailed to members permitting them to use available space in the parking lots of the Museum of History and Technology and the Museum of Natural History on Saturdays, Sundays, holidays, and evenings.

A special family program featuring color films of the Gemini space flights is scheduled for March 26th at 10:00 a.m. in the auditorium of the Museum of Natural History. A representative of NASA and Mr. Fred Durant, Assistant Director of the Smithsonian's National Air and Space Museum, will be available to answer questions.



M. Charles Lucet, Ambassador of France, and Frank Taylor, director of the U.S. National Museum, are shown examining a 3-foot-high model of DECA II, commemorating French contributions to controlled thermonuclear (fusion) research, presented to the Smithsonian by the Ambassador. The model will be a significant addition to the Smithsonian's collection of devices and memorabilia illustrating the history of the development of nuclear energy for peaceful purposes.



# THE SMITHSONIAN TORCH



AN EMPLOYEES' NEWSPAPER, PUBLISHED MONTHLY

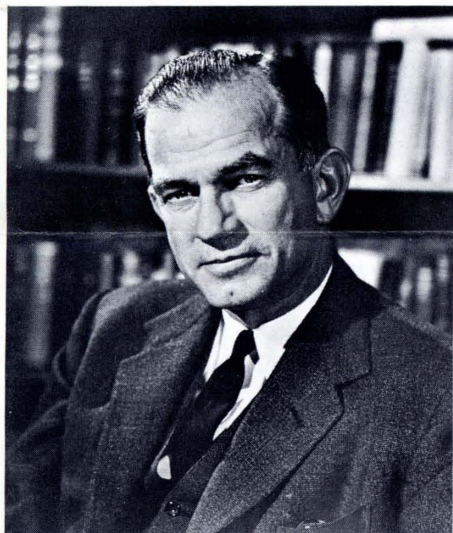
EDITORIAL BOARD: S. PAUL JOHNSTON, PAUL H. OEHSER, WILLIAM WARNER

EDITOR: ELIZABETH BEVERLEY

PHOTOS: ALBERT J. ROBINSON



## SMITHSONIAN REGENT



Senator J. W. Fulbright, Democrat, was born on April 9, 1905, and makes his home in Fayetteville, Arkansas. He was appointed a Regent of the Smithsonian on Feb. 5, 1959. He attended the University of Arkansas where he received his B.A. degree. He was a Rhodes Scholar, attending Oxford University in England. Following this he returned to the United States to receive his LL.B. degree from George Washington University. He was Special Attorney in the Anti-Trust Division of the U.S. Department of Justice 1934 to 1935; instructor in law at George Washington University from 1935 to 1936; and lecturer in law at the University of Arkansas from 1936 to 1939. He served as president of the University of Arkansas from 1939 to 1941. On Nov. 3, 1942, he was elected to the 78th Congress and in 1944 he was elected to the U.S. Senate for the term ending Jan. 3, 1951. He has been reelected for the terms ending in 1957, 1963, and the present one ending in 1969.

## MULTHAUF AWARDED PRIZE

Robert P. Multhau was awarded the Abbott Payson Usher Prize for 1965 by the Society for the History of Technology for his paper "Sal Ammoniac: A Case History in Industrialization," published in *Technology and Culture* (Volume 6, p. 569 to 586). The Abbott Payson Usher Prize was established to encourage the publication of original research of the highest standards in the field of the history of technology. It is awarded annually to the author submitting the best article or other work published by the Society in the preceding calendar year.

## BAIRD PLAQUE TO BE REPLACED IN NEW SITE IN READING, PA.

Spencer Fullerton Baird, Secretary of the Smithsonian from 1878-1887, was born in Reading, Pa. It is interesting to note in *THE TORCH* that 79 years after his death, the Historical Society of Berks County in Reading has rescued a huge brass plaque marking the Secretary's home, and is now carefully keeping it housed in their headquarters. Sometime in June they expect to place the plaque in the same site on a handsome new building, now occupied by a bank-office structure. Mr. Oehser recently completed an essay for the *REVIEW* of the Historical Society of Berks County on Spencer Fullerton Baird, which they plan to publish in June 1966.

## RECENT APPOINTMENTS

### MEMBER OF THE NAM ADVISORY BOARD

Col. John H. Glenn, Jr., USMC (Ret.), has been appointed by President Johnson as a member of the National Air Museum Advisory Board. Colonel Glenn fills the place on the Board made vacant by the resignation of Gen. James H. Doolittle. The appointment of one of America's pioneer astronauts to the Advisory Board is of particular significance in view of the Nation's expanding activities in space exploration and of the Smithsonian's pending legislation to designate the National Air Museum as the National Air and Space Museum.

### SPECIAL ADVISER ON TROPICAL BIOLOGY

F. Raymond Fosberg has been appointed Special Adviser on Tropical Biology in the Office of the Director of MNH. It is anticipated that his advice and counsel will help the Smithsonian to participate effectively in organizations devoted to tropical biology, to coordinate Smithsonian activities in the tropics with host institutions and local scholars, and to expand our programs of research.

Dr. Fosberg comes to SI from the U.S. Geological Survey, where he has served since 1951 as a specialist on vegetation types and ecology. His knowledge of the tropical scene has been drawn from his own wide-ranging field work, with research specialization in the vegetation of Pacific islands and southeast Asia, as an active member of UNESCO's Humid Tropics Committee, and as a consultant to numerous national and international scientific groups. Mr. Fosberg is in Room 414, MNH extension 5841.

## CHURCH PAINTINGS EXHIBITED

David Scott, Director of the National Collection of Fine Arts, and David C. Huntington, of Smith College, are seen above standing before *Rainy Season in the Tropics*, one of the paintings in NCFAs exhibition of works by Frederic Edwin Church, a 19th century American artist. Mr. Huntington's study of Church, *Fred-eric Edwin Church . . . Vision of An American Era*, has just been published. The exhibition, organized by NCFAs under the direction of Dr. Richard Wunder, may be seen in MNH through March 13, after which it will travel to the Albany Institute of History and Art and to M. Knoedler and Co., New York.

### SQUIRES NAMED DEPUTY DIRECTOR OF MNH

Donald F. Squires became Deputy Director of MNH in January. Dr. Squires has been Chairman of the Department of Invertebrate Zoology since May 3, 1964, and served as Acting Chairman from February 1, 1964.

In addition to experience in science administration, Dr. Squires has a deep concern for the role of museums in scientific research, public and advanced education, and exhibits technology.

### SPECIAL ASSISTANT TO THE DIRECTOR, NAT. ZOOL. PARK

Nels Werner III has joined the National Zoological staff as Special Assistant to the Director. He received his bachelor's degree at Wisconsin State College, Stevens Point, in 1959, with conservation and biology as major areas of study. At the close of this year he expects to receive his master's degree in park administration from Michigan State University.

### PERSONNEL MANAGER OF SAO

Richard W. McCarthy of Amherst, N.H., has been appointed Personnel Manager of SAO by Dr. Fred L. Whipple, Director of the Observatory. Mr. McCarthy will supervise the recruitment and hiring of scientific, technical, and administrative personnel for the Observatory. He is replacing Jack Coffey who will now serve as Special Assistant for Management in the Director's Office. Mr. McCarthy is a Harvard graduate with over 17 years of personnel management experience in New England.



# FOCUS: Visiting Scientists and Scholars Using Smithsonian for Research

*This year more than 25 scientists and scholars are working at the Smithsonian in predoctoral or postdoctoral research programs in the sciences, history, and technology. Most of these people are working under NAS grants, some under SI grants; for while the Institution has always welcomed and encouraged visiting scholars, it*

*has never before carried out a fellowship program on such a scale. The group described below is the first to participate in the Smithsonian Institution's newly scheduled educational program. As announced in Research Opportunities, scholars can now apply directly to the Division of Education and Training or to the research staff*

*for advice, information, and financial support for the pursuit of research projects.*

*A few of the group were not available when pictures were taken, but the information concerning their departments of study in SI, the schools from which they came, and their fields of study is listed.*



**John H. BEAMAN**  
Dept. of Botany  
Michigan State  
Studying the alpine  
flora of Mexico and  
Guatemala.



**Amando DUGAND**  
Dept. of Botany  
Guggenheim Fellow  
Barranquilla. Studying  
genus *Bignonia* on arid  
northern coast of Co-  
lombia.



**Alfred HENDERSON**  
Div. of Med. Science  
Temple U., M.D.  
Consultant to Div. of  
Medical Science.



**James H. BREWER**  
Dept. of Arts & Manuf.  
North Carolina Col-  
lege. Writing book on  
"Negro Craftsmen in  
the Confederate War  
Effort, 1861-1865."



**William A. GOSLINE**  
Dept. of Vert. Zool.  
University of Hawaii  
A classification study  
of the teleostean fishes  
of the order Perci-  
formes.



**Henry J. KAUFFMAN**  
Dept. of Arts & Manuf.  
Millerville State Col-  
lege, Millerville, Pa.  
Study of technology in  
America from 1607  
until the present.



**Isabel CANET**  
Dept. of Invert. Zool.  
Radcliffe College  
Studying the genus  
*Pemphigus* in American  
(Atlantic and Pacific)  
waters.



**Brother Daniel  
GONZALES**  
Dept. of Botany  
Colegio San Jose  
Medellin, Colombia.  
Fern genera. Medicinal  
properties of certain  
plants.



**Roman KENK**  
Dept. of Invert. Zool.  
Univ. of Ljubljana,  
Yugoslavia (Lib. of  
Cong., ret.) Studying  
morphology, ecology,  
distribution, and tax-  
onomy of freshwater  
triclad (planarians).



**Everett D. CASHATT**  
Dept. of Entomology  
Catholic University  
Writing a revision of  
the North American  
Chrysanginae, a small  
group of Lepidoptera.



**Charles W. HARPER,  
Jr.**, Dept. of Paleobi-  
ology, Univ. College  
of Swansea, Wales  
Studying taxonomy,  
phylogeny, and distri-  
bution in time and  
space of Upper Ordo-  
vician, Silurian, and  
Devonian articulate  
brachiopods.



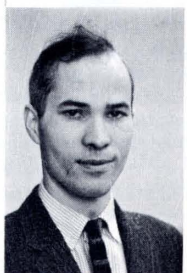
**Charles LA RUE**  
Dept. of Vert. Zool.  
Univ. of Maryland  
Functional anatomical  
study of the skull in  
certain Ciconiiformes  
(herons, bitterns,  
storks, ibises, and fla-  
mingos).



**Paul W. DEVORE**  
Dept. of Science &  
Tech., State U. College  
Oswego, N. Y.  
Direction-changing in-  
novations and inven-  
tions in the transporta-  
tion and communica-  
tions industries.



**Elizabeth M. HARRIS**  
Div. of Graphic Arts  
Univ. of Reading  
England  
The development of the  
early photomechanical  
printing processes in  
Europe and America.



**Peter B. LEAVENS**  
Dept. of Min. Sciences  
Harvard University  
Studying mineralogy  
of phosphates, particu-  
larly geochemistry of iron-  
manganese phosphate  
formation.



**BOTANY RESEARCH ASSOCIATE  
AUTHORS NEW BOOK**



Rosalie  
**MADDOCKS**  
Dept. of Paleobiology  
Univ. of Kansas  
Studying the recent ostracodes collected by the Indian Ocean Expedition.



Francisco **PARENTI**  
Radiation Biology Lab.  
U. of Milano,  
Milan, Italy  
Studying biochemical developments of plastids.



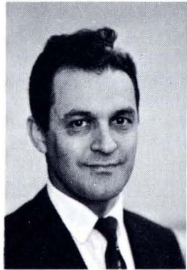
Rattarithkul  
**MANAP**  
Dept. of Entomology  
Thammasat U., Bangkok, Thailand. Studying *Culex*, subgenera *Lophoceraomyia* and *Toxorhynchites*, of Thailand.



Carmen  
**PERRILLIATT**  
Univ. of Mexico  
Dept. of Paleobiology  
Studying Miocene mollusks.



Frank **MATURO, Jr.**  
Dept. of Invert. Zool.  
Univ. of Florida  
Studying the Bryozoa of the east coast of the U. S.



Jayme de Loyola  
**SILVA**  
Dept. of Invert. Zool.  
U. of Parana, Brazil  
Guggenheim Fellow  
Studying Isopoda-Sphaeromatidae.



Rokaro **MORIKAWA**  
Dept. of Paleobiology  
Saitama University  
Urawa, Japan  
U.S.-Japan Cooperative Science Program.  
Studying fusulinid Foraminifera of the western U. S. and Japan.



William L. **TAYLOR**  
Div. of Transportation  
Brown University  
Studying the effect of railroad control on New England Coastal Steamship Lines 1870-1917.



Bernard **NEBEL**  
Radiation Biology Lab.  
Duke University  
Studying photomorphogenesis of bean seedlings.

John F. **CARTER**  
Dept. of Paleobiology  
SI/U. of Cincinnati  
Cooperative Program

Mary **GARDINER**  
Dept. of Invertebrate  
Zoology  
Bryn Mawr College

James  
**McCULLOUGH**  
Radiation Biological  
Laboratory  
George Washington  
University  
Predoctoral Intern

George **McKAY**  
National Zoological  
Park  
Univ. of Maryland  
Predoctoral Intern

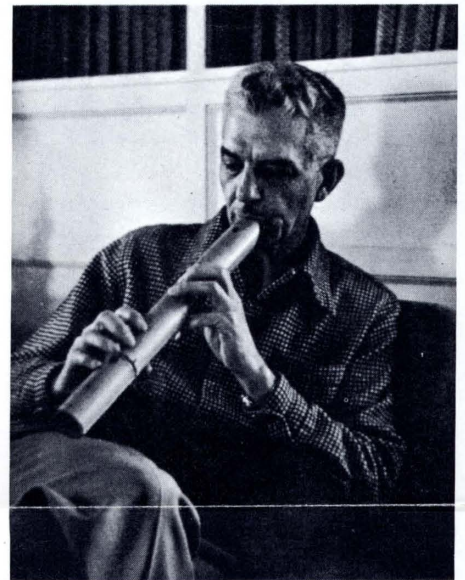
Nancy  
**MUCKENHIRN**  
National Zoological  
Park  
Univ. of Maryland  
Predoctoral Intern

Mrs. Mabel Ruttle  
**NEBEL**  
Dept. of Botany (Lib.)  
Writing a biography of  
Dr. Ruth F. Allen.

Gary L. **RANCK**  
Dept. of Vert. Zool.  
University of Utah  
Predoctoral Intern



Juan **PANCHO**  
Dept. of Botany  
U. of the Philippines  
Guggenheim Fellow  
Studying the flora of Mt. Makiling, Philippines.



Floyd A. McClure, Honorary Research Associate, Department of Botany, is shown in the photo above testing a shepherd's pipe made by him from a section of a culm of a Chinese bamboo first discovered and made known to science through him and named *Arundinaria amabilis* McClure.

Dr. McClure's new book, *The Bamboos: A Fresh Perspective*, just published by the Harvard University Press, is a distillation of a lifetime of experience in the study of bamboo, "tree grass; unique in the plant kingdom; symbol of uprightness, chivalry and devotion; the inspiration of poets, artists and philosophers; writing material of the ancients; the stylus of contemporaries; food, shelter and clothing of the people; industrial substance of a thousand uses; redeemer of waste places; protector of the soil."

First in China and neighboring countries of southeast Asia and later in the Western Hemisphere, Dr. McClure has examined living specimens of more different kinds of bamboo than any other man and acquired a comprehensive knowledge of them that is unique. Although this scholarly study is primarily of the botanical aspects of bamboo, the book provides a highly useful guide in exploiting the potential value of bamboo in the developing economies of tropical countries. There is no comparable work on bamboos in any Western language.



Andrew F. Michaels, Director BMD, congratulates Israel Wilson, on his selection as Guard of the Month. Carl E. Grimsley, Chief, Protection Division, BMD, is in the center. In addition to the Certificate of Achievement, a \$25 U.S. Government Bond and a Guard of the Month Emblem was presented to Mr. Wilson.